



EuroTouch-2IN System

Mas de Garrigues - 81170 Loubers

Tél : + 33 (0)5 63 53 92 14 - Fax : + 33 (0)5 63 53 94 25

Administratif-fbasse@wanadoo.fr

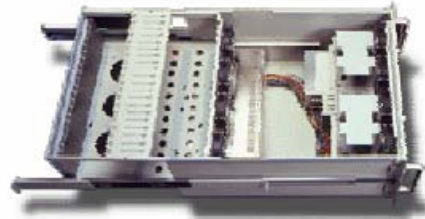
Agence Toulouse EuroTouch-Centre Technique 2IN System

9 Chemin de Lourmet - 31180 Castelmaurou

Ligne IP : 0877 821 335 (Tarification Locale) Tél/Fax : +33 (0)5 61 35 84 30

www.2in-system.com - contact@2in-system.com

Fiche Technique JOY-826, Rack Serveur 19 " hauteur 6U



Introduction

The **JOY-826** industrial chassis is designed for use in engineering, scientific, telecommunications, data acquisition and process control applications where ordinary PCs do not operate reliably. This sturdy, wellcooled, easy-to-service rackmount chassis with its removable system board cage is designed to maintain high reliability and availability in hostile work environments. Each chassis fits a 8/14/20-slot passive backplane and CPU card or standard Baby-AT, FullSize-AT or ATX motherboard.

The **JOY-826** features **four 5.25"** and **two 3.5"** disk drive space for floppy, as well as **six 3.5"** hard drives for massive data storage. A front access washable filter and seven fans provide positive pressure cooling.

The heavy steel construction with hold-down clamp and removable shock-resistant drive bay to enable the **JOY-826** to withstand heavy vibration and shock. The special front panel and lockable door design protects the system from tampering and dust.

Specifications

- * Rugged construction for harsh environments
Meet EIA RS-310C rack-mounted standard
- * Support 8/14/20-Slot ISA or PCI/ISA PICMG passive backplane and Baby-AT, FullSize-AT or ATX motherboard
- * Support popular PS/2 type or hot-swapped redundant power supply
- * Support eight 3.5" and four 5.25" disk drives
- * Front panel power switch, reset switch and HDD, Power LED
- * Seven front cooling fan with removable air filter
Hold-down clamp design to protect the plug-in cards to eliminate vibration

Rear Panel Pictures



8+4-Slot back panel window for FullSize-AT boards



14-Slot back panel window for passive backplane



EuroTouch-2IN System

Mas de Garrigues - 81170 Loubers

Tèl : + 33 (0)5 63 53 92 14 - Fax : + 33 (0)5 63 53 94 25

Administratif-fbasse@wanadoo.fr

Agence Toulouse EuroTouch-Centre Technique 2IN System

9 Chemin de Lourmet - 31180 Castelmaurou

Ligne IP : 0877 821 335 (Tarification Locale) Tèl/Fax : +33 (0)5 61 35 84 30

www.2in-system.com - contact@2in-system.com

JOY 826

Specifications (following)

- * Lockable front floppy disk drive door for anti-dust and running security
- * Removable disk drive bay with shock-resistant design
- * Special front panel and front door design with up to four keyboard connectors, reset-switches and status LEDs for single- or multi-system environments

Processor

- * The **JOY-826** chassis can be configured with various full and half-size CPU cards. The model also supports the popular inexpensive Baby-AT, FullSize-AT or latest ATX motherboards.

Passive Backplane

- * Support 8/14/20-Slot ISA or PCI/ISA PICMG passive backplane and standard Baby-AT, FullSize-AT or ATX motherboards

Disk Storage

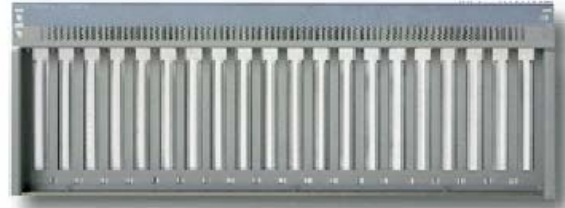
- * Space for **eight 3.5"** and **four horizontal 5.25"** disk drives
- * Removable disk drive bay with shock-resistant design

Power Supply

- * Support the popular low cost PS/2 type or hot-swap redundant power supply with up to 2x400Watt

Keyboard Connector

- * Up to 4 Standard Keyboard connectors available on front side



20-Slot back panel window for passive backplane



ATX-Slot back panel window for Standard-ATX boards We can offer a lot of special ATX I/O windows

Special Features

- * Support **eight 3.5"** and **four 5.25"** drive bays for HDD, FDD or CD-ROM
- * Special drive bay design for shock-resistant
- * Seven front cooling fan with removable air filter for easy cleaning
- * Special front panel design for single system or multi system environment
- * We can also offer a complete range of ready-to-run Systems based on popular motherboards (AT/ATX) or with passive backplanes and cpu cards for more useable slots (PCI and ISA). Special Version with up to 10 PCI slots or MultiSystems available.

Environmental / Physical

Humidity:

- * 10% - 90% RH

Vibration:

- * Sweeping frequency: 5~35~200Hz
- * Amplitude: 0.6mm (zero to peak)
- * Acceleration: 1.5G

Operating Temperature:

- * 0°C to 55°C

Dimensions: [with handle]

- * W - 481.1mm
- * D - 625.0mm [678.1mm]
- * H - 266.1mm